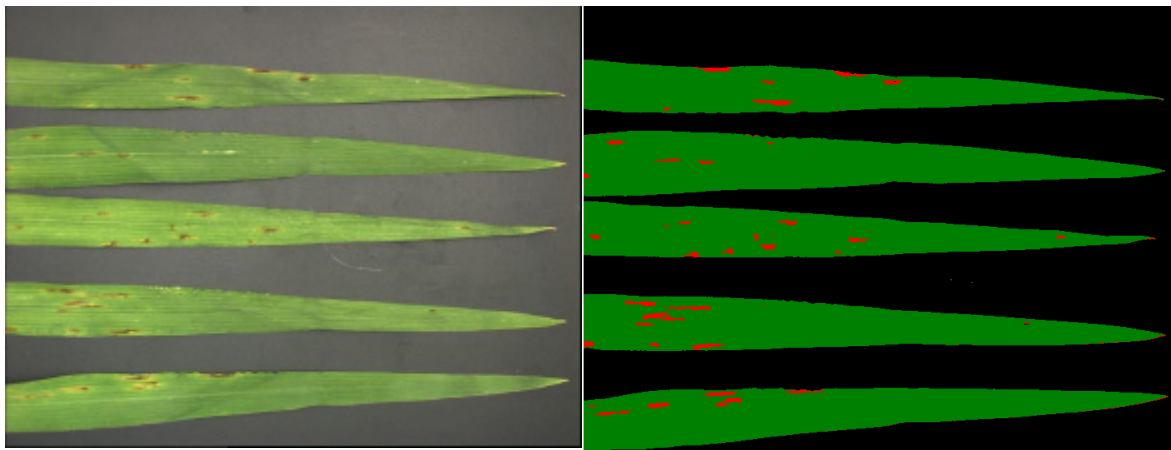


LemnaTec SAW Bonit

Assessment of Leaf Damage on Monocots

In greenhouse and field studies the production of well-documented data free from subjective evaluation is essential. Objective estimation of damaged plant areas may be based on random samples analysed under reproducible light conditions in the lab. The LemnaTec SAW Bonit software in connection with the LemnaTec Scanalyzer image acquisition unit can quantify damages in number, size and area, including classification of colours.



Samples show net blotch on barley. The classification of damages may be based either on different colours, easily implemented in the SAW Bonit system, or on sophisticated image processing steps which allow for highly differentiated identification of objects.

Results show that a reproducible ranking of different degrees of damage may be achieved by human sight. But quantifications in term of percentage of damage bear the risk of considerable systematic faults.

The application of image processing solves this problem, also permitting later reanalysis for more detailed information and providing customers with better documentation.

For further information please do not hesitate to contact

LemnaTec GmbH
Schumanstr. 18
52146 Würselen, Germany
Tel. + 49 2405 / 4126-0
Fax + 49 2405 / 4126-26
info@lemnatec.com
www.lemnatec.com