



## *LemnaShare*

### Instructions for LemnaShowcase

Robert Firnich  
LemnaTec GmbH  
Schumanstr. 18  
52146 Würselen  
Germany  
+ 49 2405 4126-22  
robert.firnich@lemnatec.de  
[www.lemnatec.de](http://www.lemnatec.de)

## Introduction

LemnaShowcase is an online service which presents the performance of our image analyses. This features our public image analysis configuration<sup>1</sup> (IAC) and the associated resulting images.

The details of the Lemna IAC Showcase are explained in the following.

## LemnaShowcase

After the software is launched the main window of the LemnaShowcase appears (see Figure 1). The main window primarily consists of a table (middle), a filter (left), a search text field (top left), a tool bar (right) and an image browser (right).

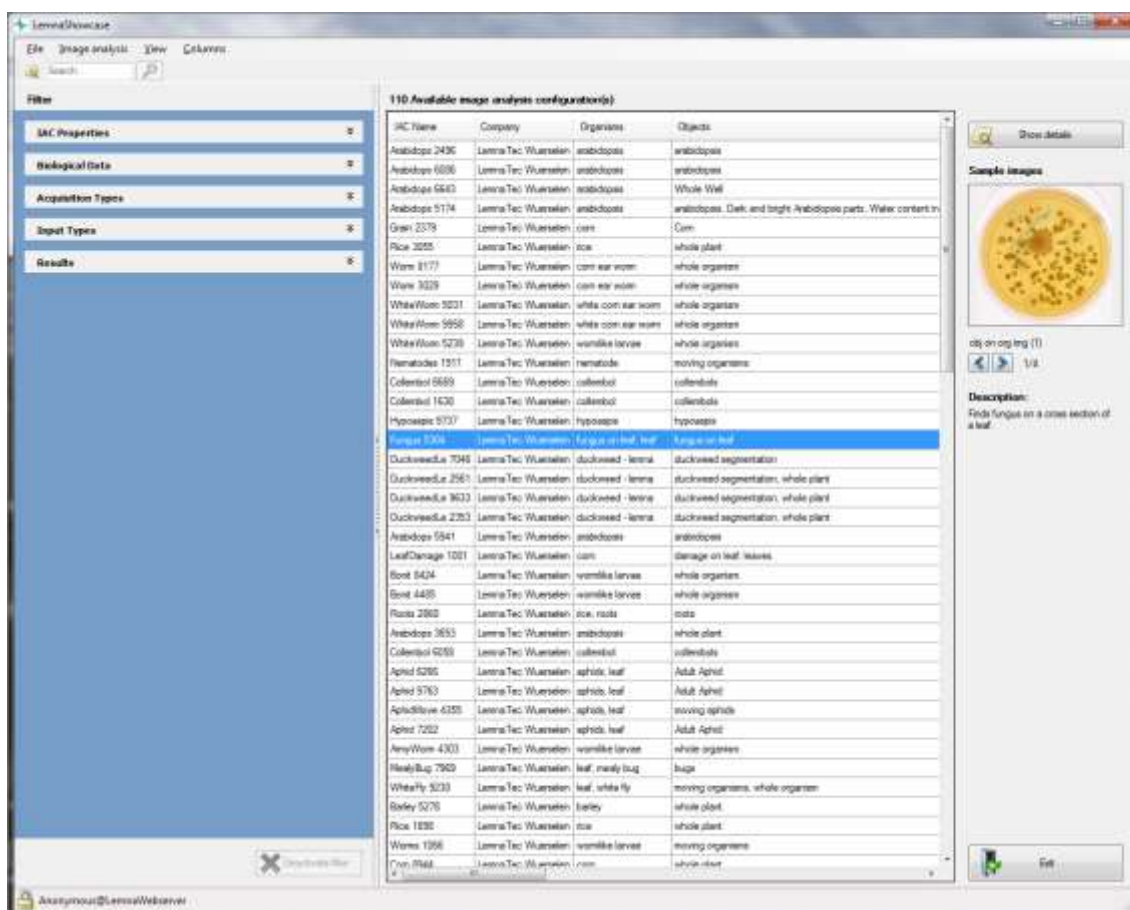


Figure 1 main window

<sup>1</sup>Image analysis configuration = configuration, which is used to carry out an image analysis

### Browse IACs and limit data view

The table in the middle of the main window contains the IACs. Generally only the most important data is shown in the table. If you need more information double click the appropriate line of the IAC or select the line and click the “show details” button on the tool bar. The details window then opens up (see Figure 2), whereby all data on the selected IAC is available.

As well as the textual data, there are example pictures for all new IACs. These are downsized resulting images from the analyses. The example images are automatically displayed in the image browser as soon as an IAC is selected. There are normally several example images per IAC. Both arrow buttons under the image are used to navigate through a list of images. The shown example images can be displayed in a separate window on request. To do this, simply click on the example image.



Figure 2 Details window



If you are looking for a specific IAC, you can use the search text field to do this. Type a search word and then either "enter" or click on the button with the magnifying glass. The table now only contains IACS which fit your search word. In order to reset the search, click on the button which now contains a blue X.

If necessary you can reduce the data shown in the table with the filter. The filter is divided into various categories and sub-categories. It can be switched off again with the "deactivate filter" button.

**For specific details, questions or any further information, please do not hesitate to contact LemnaTec.**

**LemnaTec GmbH**  
**Schumanstr. 18**  
**52146 Würselen**  
**02405 / 4126-22**  
**robert.firnich@lemnatec.de**  
*www.lemnatec.com*