



LemnaShare

Instructions for LemnaNet

Robert Firnich
LemnaTec GmbH
Schumanstr. 18
52146 Würselen
Germany
+ 49 2405 4126-22
robert.firnich@lemnatec.de
www.lemnatec.de

Contents

Introduction.....	3
Image analysis portal	4
Downloading.....	6
Uploading.....	6
Direct image analysis exchange.....	7
Uploading.....	8
Browse uploaded IACs/IAPs	8
Downloading.....	8

Introduction

LemnaNet is an online services offer to support our customers. It currently consists of two web programs: “image analysis portal” and “direct image analysis exchange”. Both programs allow image analysis configuration¹ (IAC) and image analysis package² (IAP) to be exchanged.

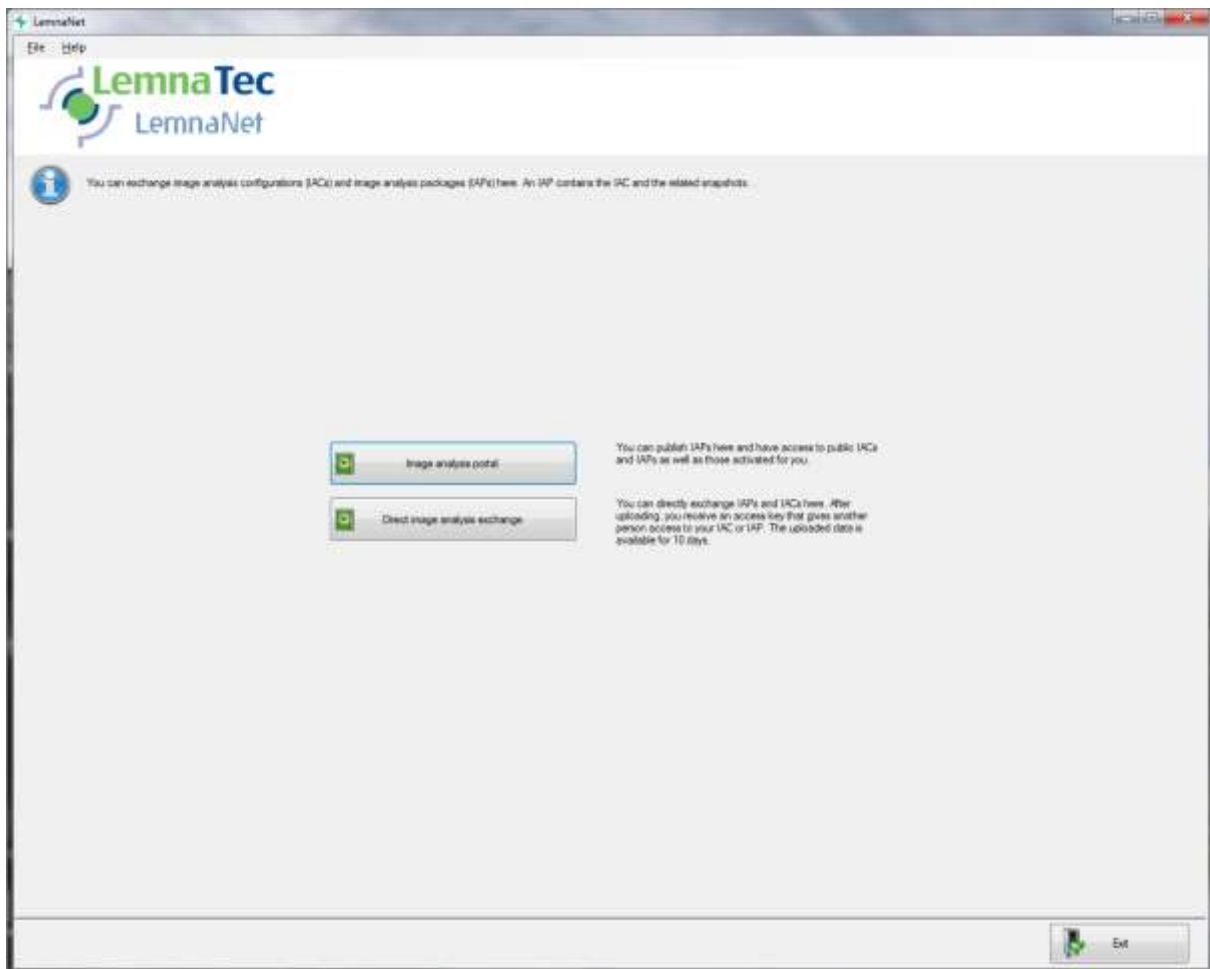


Figure 1 LemnaNet main window

Details are explained below.

¹Image analysis configuration = configuration which is used to carry out an image analysis

²Image analysis package = package from an image analysis configuration and appropriate snapshots

Image analysis portal

With the image analysis portal you can publish IAPs and have access to public IACs and IAPs which have been specially released for you.

In order to be able to use that image analysis portal, you have to authenticate yourself using your Dongle. Simply connect your dongle to your computer and start the image analysis portal by clicking on the appropriate button in the main window of the LemnaNet (see Figure 1).

After you have been successfully authenticated, the main window of the portal appears (see Figure 2). The main window primarily consists of a table (middle) with a filter (left), a search text field (top left), a tool bar (right) and an image browser (right).

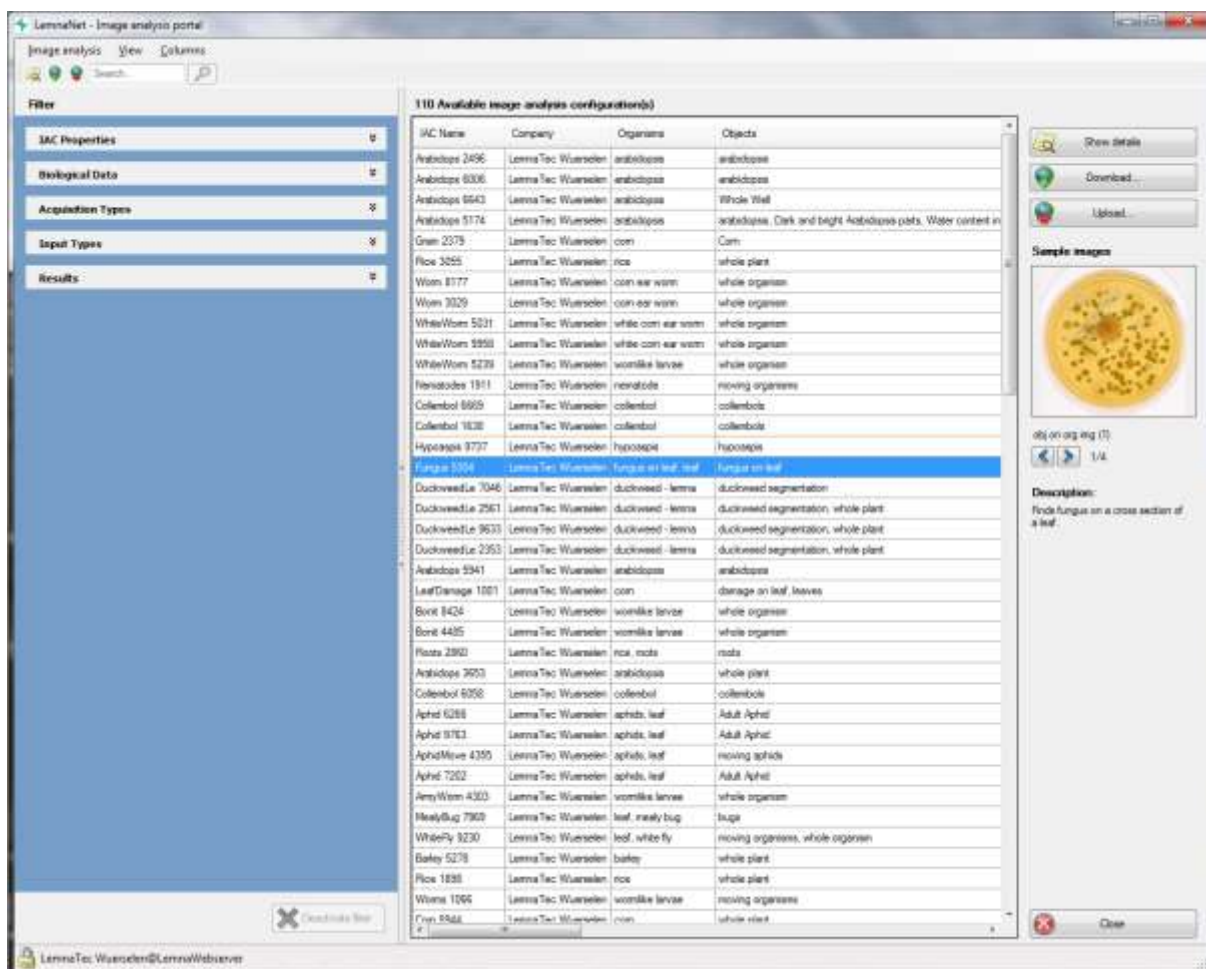


Figure 2 image analysis portal main window

Browse IACs and limit data view

- The table in the middle of the image analysis portal contains all IACs which you have access to. Generally only the most important data is shown in the table. If you need more information double click the appropriate line of the IAC or select the line and click the “show details” button in the tool bar. The Details window then opens (see Figure 3) whereby all data on the selected IAC is available.
- As well as the textual data, there are example pictures for all new IACs. These are downsized resulting images from the analyses. The example images are automatically displayed in the image browser as soon as an IAC is selected. There are normally several example images per IAC. Both arrow buttons under the image are used to navigate through a list of images. The shown example image can be displayed in a separate window on request. To do this, simply click on the example image.

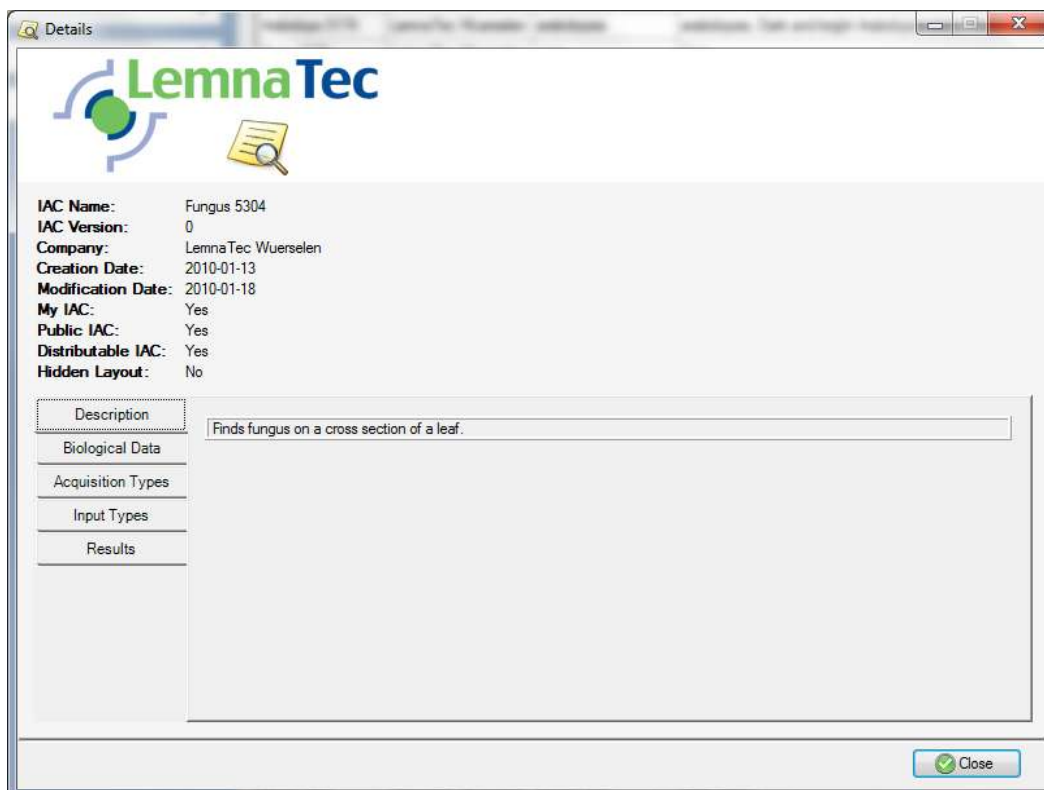


Figure 3 Image analysis portal details window

- If you are looking for a specific IAC, you can use the search text field to do this. Type a search word and then either “enter” or click on the button with the magnifying glass. The table now only contains IACS which fit your search word. In order to reset the search, click on the button which now contains a blue X.
- If necessary you can reduce the data shown in the table with the filter. The filter is divided into various categories and sub-categories. It can be switched off again with the “deactivate filter” button.

Downloading

In order to download an IAC, you must firstly select it from the table and then click the “download” button in the tool bar. If the button is greyed out, you have no authorisation to download this IAC.

A dialogue appears which you use to select whether you want to download the IAC or the corresponding IAP.

Uploading

In order to upload an IAP, click the “upload” button in the tool bar. It opens up the upload assistant which guides you through the process step by step. After this has been successfully uploaded, your IAP is checked by us and then published so that you and other customers can download it via the image analysis portal.

Direct image analysis exchange

You can exchange IAPs and IACs directly with one another in the web program “Direct image analysis”.

Firstly you have to authenticate yourself using your dongle. To do this, simply connect your dongle to your computer and click on the “direct image analysis exchange” button in the main window of LemnaNet (see Figure 1).

After this has been successfully authenticated, the program window for the direct exchange opens up (see Figure 4). The main window primarily consists of a table (middle), a filter (left), a search text field (top left), a tool bar (right) and an image browser (right).

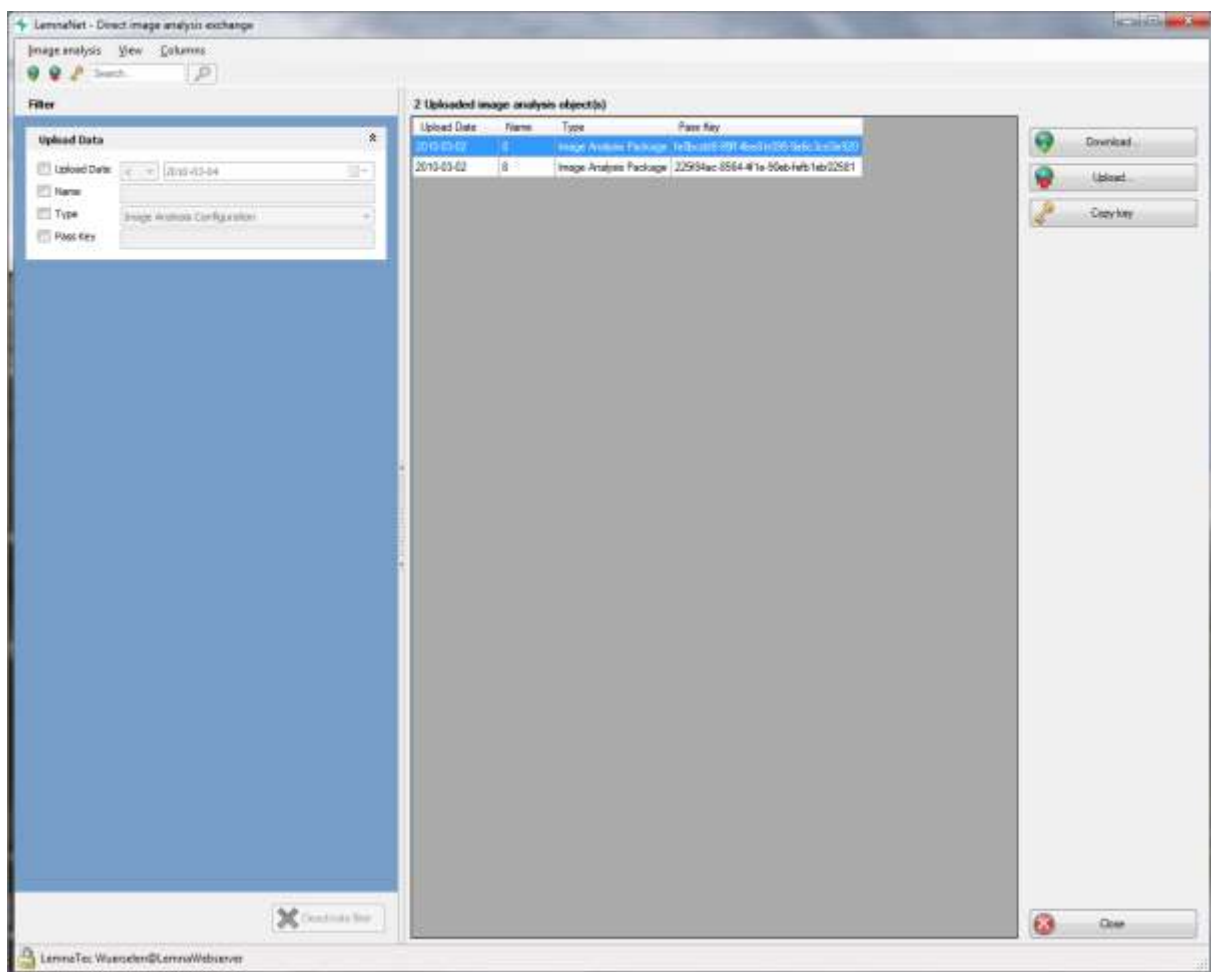


Figure 4 Direct image analysis exchange main window

Uploading

In order to upload an IAC or an IAP, click on the “upload” button in the tool bar. It opens up an assistant which takes you through the uploading process. After the uploading is complete, the uploaded IAC/IAP appears in the central table. You can select it there and copy a special access key to the clipboard using the “copy key” button. This key is necessary so that someone else can download your IAC/IAP. Please notice that the access to your uploaded IAC/IAP is only possible for 10 days for security reasons.

Browse uploaded IACs/IAPs

Just as in the image analysis portal (see page 5) you can browse, scan and filter the uploaded IACs/IAPs. There is, however, no detail view as the data is already fully recorded in the table.

Downloading

In order to download an IAC or an IAP, click on the “download” button in the tool bar. It opens up an assistant which guides you through the download process. Make sure that you have the access key for the IAC/IAP that you would like to download.

For specific details, questions or any further information, please do not hesitate to contact LemnaTec.

LemnaTec GmbH
Schumanstr. 18
52146 Würselen
02405 / 4126-22
robert.firnich@lemnatec.de
www.lemnatec.com